

# Welcome to CAE Stockholm Training Center



## ADDRESS

Kabinvägen 5, 190 60 Arlanda

## POSTAL ADDRESS

SE-195 87 STOCKHOLM

## FRONT DESK

Email: [trtostockholmservice@cae.com](mailto:trtostockholmservice@cae.com)

Phone: +46 8 5183 9100

**NON-OFFICE HOURS:** Badges, locker keys  
FFS Techn on Duty: +46 8 5183 9130

**URGENT MATTERS:** fixed wing scheduling  
Scheduler on Duty: +34 618 778 725

## Regular OFFICE HOURS

Front desk manned  
08:00-16:00 Mon-Fri

## ENTRANCE

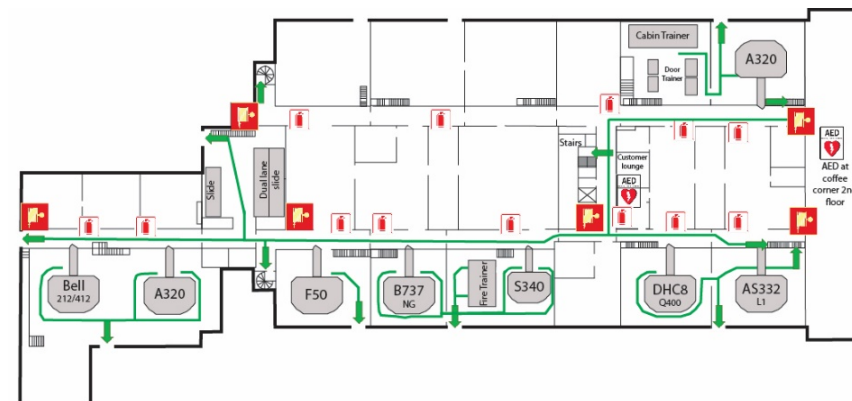
during night (23:00-05:00):  
Card reader, Instructor-/student badge

## WiFi

Name: CAE WiFi  
Password: **A1rbr8ke**

## BUSINESS CENTER (2<sup>nd</sup> Floor)

Computers with Internet connection,  
printer and copy machine



FFS – FIRST FLOOR Entrance from Ground and 2<sup>nd</sup> floor

## TRANSPORTATION

### CAE – Airport:

Shuttle bus “ALFA” leaves 4 times/hour to/from  
bus stop 3

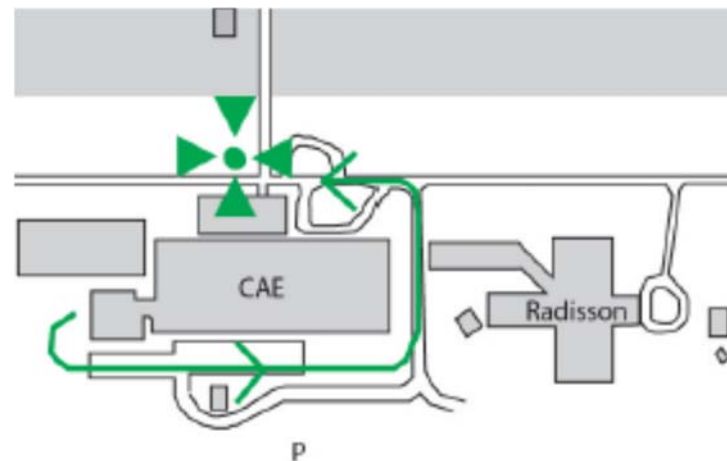
### CAE – Quality & Connect Hotel:

Shuttle bus “Quality/Connect”  
From CAE 2 times/hour: --:07 and --:37 (01-  
04am, no shuttle from Quality, from Connect  
book shuttle in advance).

## USEFUL NUMBERS

Emergencies: 112  
Medical Service Information: 1177  
Taxi: +46 20-20 20 20

Radison Blu Arlanda: +46 8 506 840 00  
Quality Hotel: +46 8 595 111 00  
Connect Hotel: +46 8 591 200 50



## PLEASE REMEMBER

Please comply with all signage (i.e. prohibited areas).  
Photos are not allowed inside the building.  
No food or drinks allowed inside the simulator area.  
Do not leave your personal belongings unattended.  
Simulator Journey Logs must be completed after each session.  
Online CAE Survey is available on 2<sup>nd</sup> and ground floor for completion by instructors and  
trainees.  
IN EVENT OF A FIRE ALARM, move to the meeting point outside main entrance.

*We wish you a pleasant training experience and  
stay with us!*