

Welcome to CAE Copenhagen Training Center



VISITING & POSTAL ADDRESS

Kystvejen 40, 2770 Kastrup

FRONT DESK

Mail trtocopenhagenservice@cae.com

Phone +45 7230 0700

NON-OFFICE HOURS, URGENT MATTERS

FFS Technician on Duty +45 7230 0730

Scheduler on Duty +34 618778725

ENTRANCE

After office hours 17.00-07.00

Card reader, access-badge, Intercom

ENTRANCE

After office hours 17.00-07.00

Card reader, access-badge,

Intercom

WIFI

Name CAE WIFI

Password A1rbr8ke

BUSINESS CENTER (GROUND FLOOR)

Computers with internet connection, printer, scanner and copy machine.

TRANSPORTATION

CAE ➡ Copenhagen Airport

Bus 35 towards the Airport

Copenhagen Airport ➡ CAE

Bus 35 towards Dragør Stationsplads/

Sundbyvester Plads

For information on bus timetable

Please contact service center

USEFUL NUMBERS

Emergency 112

Medical advice 1813

Taxi +45 2727 2727

Comfort +45 3250 1502

Parkinn Hotel +45 3287 0202

Bella Sky +45 3247 3000

Best Western +45 3251 1400

Crown Hotel +45 8877 6655

Clarion +45 3250 1501

PLEASE REMEMBER

Please, comply with all signage (i.e. prohibited areas).

Photos / Filming are not allowed inside the building.

No food or drinks allowed inside the simulators' area.

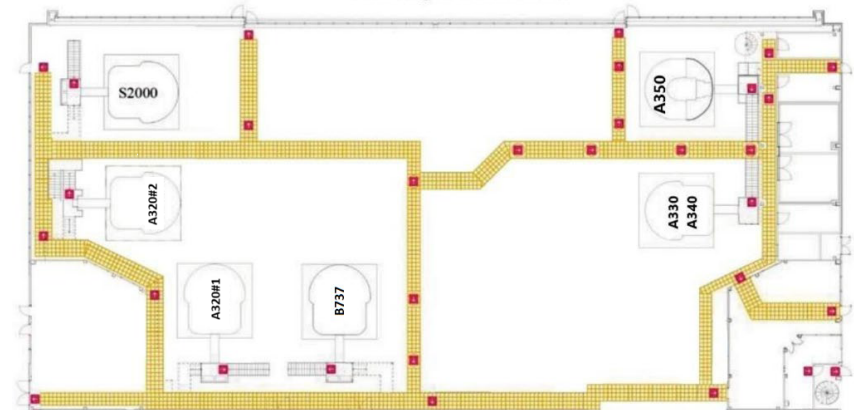
Do not leave your personal belongings unattended.

As instructor please check-in & check-out after each session to complete your simulator journey log.

Online CAE Survey is available on all floors for completion by instructors and trainees.

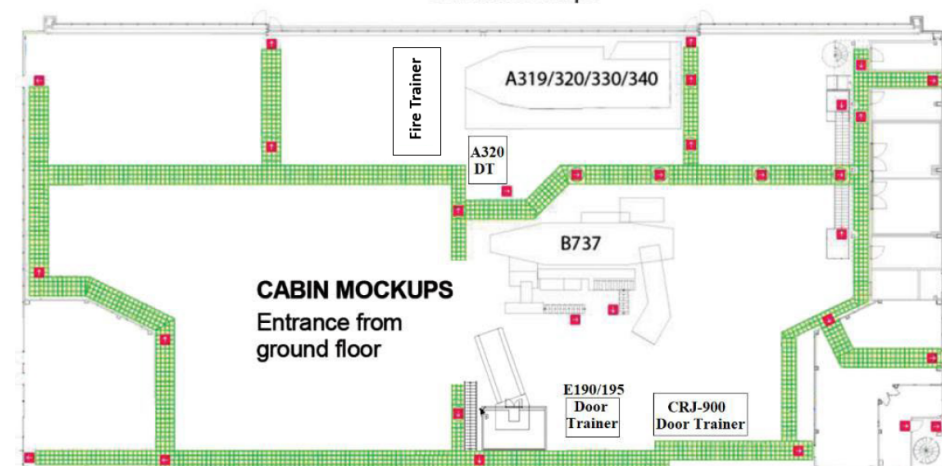
IN THE EVENT OF A FIRE ALARM, move to the meeting point outside, near the main entrance.

Full Flight Simulators



Plan for 1st floor

Cabin Mockups



We wish you a pleasant stay with us!